

# Test Report

**Report No.** RLSZD000857290008

Page 1 of 4

**Applicant** SHENZHEN HEKETAI ELECTRONIC CO.,LTD

**Address** A BLOCK4/F ,GUOLI BUILDING ,NEW ASIA ZHONGHANG ROAD.SHENZHEN CHINA

**Report on the submitted sample(s) said to be**

**Sample Name** 电容COG NPO  
**Sample Description** Gray solid with silver color metal  
**Part No.** 0402 0603 0805 1206 1210 1812 2225 3035  
**Sample Received Date** Mar. 29, 2011  
**Testing Period** Mar. 29, 2011 to Apr. 2, 2011

**Test Requested** As specified by client, to determine the Lead(Pb), Cadmium(Cd), Mercury(Hg), Hexavalent Chromium(Cr(VI)), Polybrominated Biphenyls(PBBs), Polybrominated Diphenyl Ethers(PBDEs) content in the submitted sample and it was tested as a whole.

**Test Method**

Test Item(s)	Test Method	Measured Equipment(s)	MDL
Lead(Pb)	IEC 62321:2008 Ed.1 Sec.10	ICP-OES	2 mg/kg
Cadmium(Cd)	IEC 62321:2008 Ed.1 Sec.10	ICP-OES	2 mg/kg
Mercury(Hg)	IEC 62321:2008 Ed.1 Sec.7	ICP-OES	2 mg/kg
Hexavalent Chromium(Cr(VI))	IEC 62321:2008 Ed.1 Annex C	UV-Vis	2 mg/kg
Polybrominated Biphenyls(PBBs)	IEC 62321:2008 Ed.1 Annex A	GC-MS	5 mg/kg
Polybrominated Diphenyl Ethers(PBDEs)	IEC 62321:2008 Ed.1 Annex A	GC-MS	5 mg/kg

**Test Result(s)** Please refer to the following page(s).

Tested by



Technical Manager

Inspected by

*Vargas*

Approved by

Date

Apr. 2, 2011

No. 38794485

# Test Report

Report No. RLSZD000857290008

Page 2 of 4

**Test Result(s)**

Tested Item(s)	Content
Lead(Pb)	N.D.
Cadmium (Cd)	N.D.
Mercury(Hg)	N.D.
Hexavalent Chromium(Cr(VI))	N.D.

Tested Item(s)	Content
<b>Polybrominated Biphenyls(PBBs)</b>	
Monobromobiphenyl	N.D.
Dibromobiphenyl	N.D.
Tribromobiphenyl	N.D.
Tetrabromobiphenyl	N.D.
Pentabromobiphenyl	N.D.
Hexabromobiphenyl	N.D.
Heptabromobiphenyl	N.D.
Octabromobiphenyl	N.D.
Nonabromobiphenyl	N.D.
Decabromobiphenyl	N.D.

Tested Item(s)	Content
<b>Polybrominated Diphenyl Ethers(PBDEs)</b>	
Monobromodiphenyl ether	N.D.
Dibromodiphenyl ether	N.D.
Tribromodiphenyl ether	N.D.
Tetrabromodiphenyl ether	N.D.
Pentabromodiphenyl ether	N.D.
Hexabromodiphenyl ether	N.D.
Heptabromodiphenyl ether	N.D.
Octabromodiphenyl ether	N.D.
Nonabromodiphenyl ether	N.D.
Decabromodiphenyl ether	N.D.

**Note:** The sample had been dissolved totally tested for Lead, Cadmium, Mercury.

- MDL = Method Detection Limit
- N.D. = Not Detected (<MDL )
- mg/kg = ppm = parts per million

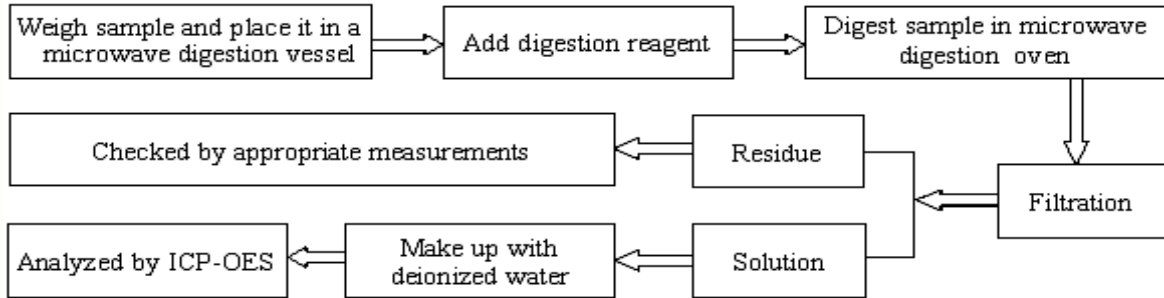
# Test Report

Report No. RLSZD000857290008

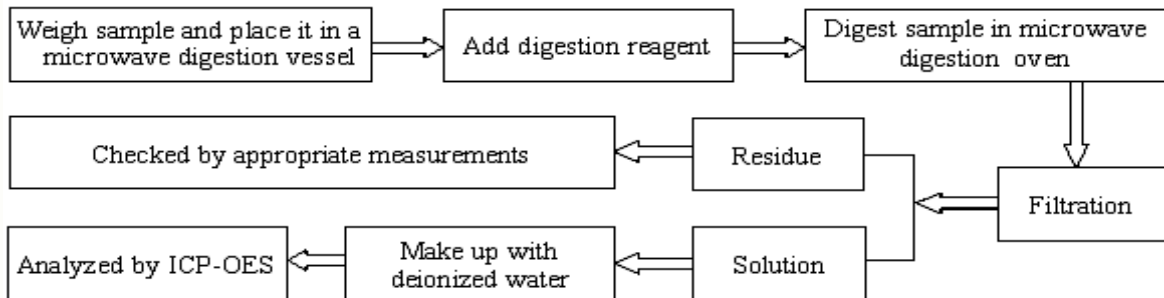
Page 3 of 4

## Test Process

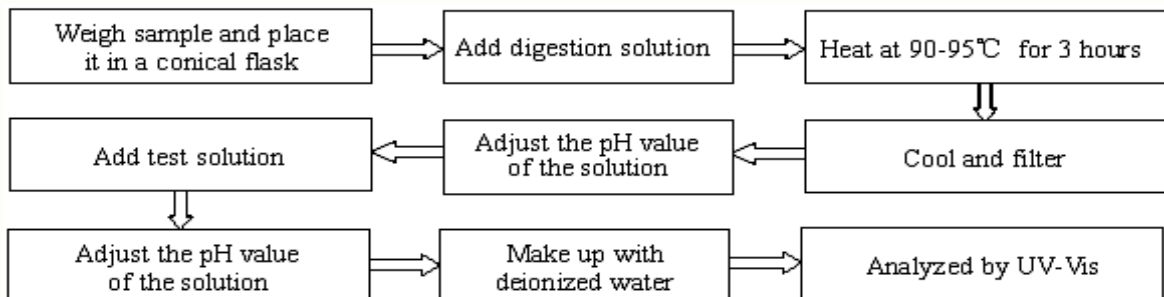
### 1. Lead(Pb), Cadmium(Cd)



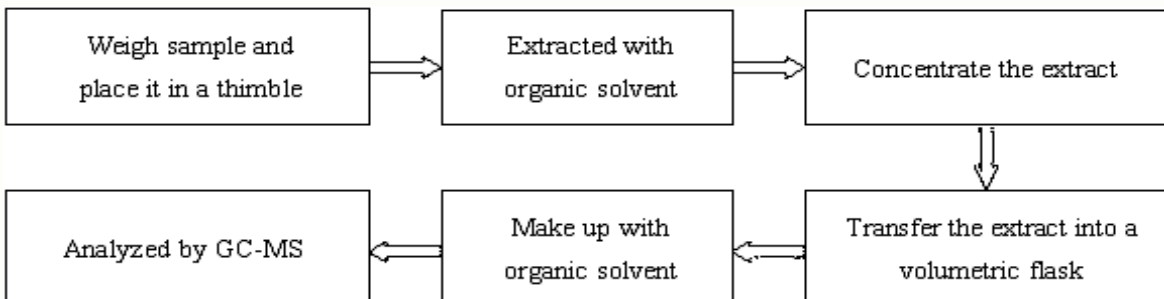
### 2. Mercury(Hg)



### 3. Hexavalent Chromium(Cr(VI))



### 4. Polybrominated Biphenyls(PBBs), Polybrominated Diphenyl Ethers(PBDEs)



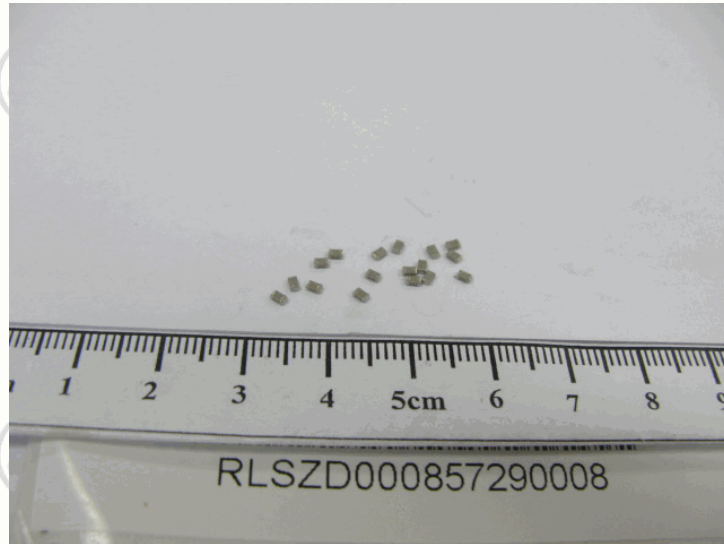


# Test Report

Report No. RLSZD000857290008

Page 4 of 4

## Photo(s) of the sample(s)



\*\*\* End of report \*\*\*

This report is considered invalidated without the Special Seal for Inspection of the CTI. This report shall not be altered, increased or deleted. The results shown in this test report refer only to the sample(s) tested. Without written approval of CTI, this test report shall not be copied except in full and published as advertisement.

Building C, Hongwei Industrial Zone, Baoan 70 District, Shenzhen

