

Test Report

Report No.:RLSZD000857290004

Page 1 of 6

Applicant :SHENZHEN HEKETAI ELECTRONIC CO.,LTD

Address :A BLOCK4/F ,GUOLI BUILDING ,NEW ASIA ZHONGHANG ROAD.SHENZHEN
CHINA

Report on the submitted sample(s) said to be:

No.	Sample Name	Sample Description
1	三极管TO-92	Black body with brown printing
2		Silver color metal pin

Part No. :TO-92 TO-92S TO-92L TO-126 TO-220 TO-252

Sample Received Date :Mar. 29, 2011

Testing Period :Mar. 29, 2011 to Apr. 2, 2011

Test Requested :1.As specified by client, to determine the Lead, Cadmium, Mercury, Hexavalent Chromium, PBBs&PBDEs content in the submitted sample.
2.As specified by client, to identify if there is the Hexavalent Chromium in the submitted sample.

Test Method: Please refer to the following page(s).

Test Result(s): Please refer to the following page(s).

Tested by

Approved by



Inspected by

Date

Vargas

Apr. 2, 2011

No.15504573



Test Report

Report No.: RLSZD000857290004

Page 2 of 6

Test Method :

Tested Item(s)	Test Method	Measured Equipment(s)	MDL
Lead (Pb)	IEC 62321:2008 Ed.1 Sec.9	ICP-OES	2 mg/kg
	IEC 62321:2008 Ed.1 Sec.10		
Cadmium (Cd)	IEC 62321:2008 Ed.1 Sec.9	ICP-OES	2 mg/kg
	IEC 62321:2008 Ed.1 Sec.10		
Mercury (Hg)	IEC 62321:2008 Ed.1 Sec.7	ICP-OES	2 mg/kg
Hexavalent Chromium (Cr(VI))	IEC 62321:2008 Ed.1 Annex B	UV-Vis	/
	IEC 62321:2008 Ed.1 Annex C		2 mg/kg
Polybrominated Biphenyls (PBBs)	IEC 62321:2008 Ed.1 Annex A	GC-MS	5 mg/kg
Polybrominated Diphenyl Ethers (PBDEs)	IEC 62321:2008 Ed.1 Annex A	GC-MS	5 mg/kg

Test Result(s):

Tested Item(s)	Content	
	Sample No.1	Sample No.2
Lead (Pb)	N.D.	N.D.
Cadmium (Cd)	N.D.	N.D.
Mercury (Hg)	N.D.	N.D.
Hexavalent Chromium (Cr(VI))	N.D.	/

Tested Item(s)	Conclusion
	Sample No.2
Hexavalent Chromium (Cr(VI))	Negative

Test Report

Report No.:RLSZD000857290004

Page 3 of 6

Test Result(s):

Tested Item(s)	Content
	Sample No.1
Polybrominated Biphenyls(PBBs)	
Monobromobiphenyl	N.D.
Dibromobiphenyl	N.D.
Tribromobiphenyl	N.D.
Tetrabromobiphenyl	N.D.
Pentabromobiphenyl	N.D.
Hexabromobiphenyl	N.D.
Heptabromobiphenyl	N.D.
Octabromobiphenyl	N.D.
Nonabromobiphenyl	N.D.
Decabromobiphenyl	N.D.
Polybrominated Diphenyl Ethers(PBDEs)	
Monobromodiphenyl ether	N.D.
Dibromodiphenyl ether	N.D.
Tribromodiphenyl ether	N.D.
Tetrabromodiphenyl ether	N.D.
Pentabromodiphenyl ether	N.D.
Hexabromodiphenyl ether	N.D.
Heptabromodiphenyl ether	N.D.
Octabromodiphenyl ether	N.D.
Nonabromodiphenyl ether	N.D.
Decabromodiphenyl ether	N.D.

Note: The sample had been dissolved totally tested for Lead, Mercury, Cadmium.

-MDL = Method Detection Limit

-N.D. = Not Detected (<MDL)

-mg/kg = ppm = parts per million

-Negative = Absence of Cr(VI) , the detected Cr(VI) concentration in the boiling water extraction solution is less than 0.02 mg/kg with 50cm² sample surface area used.

Test Report

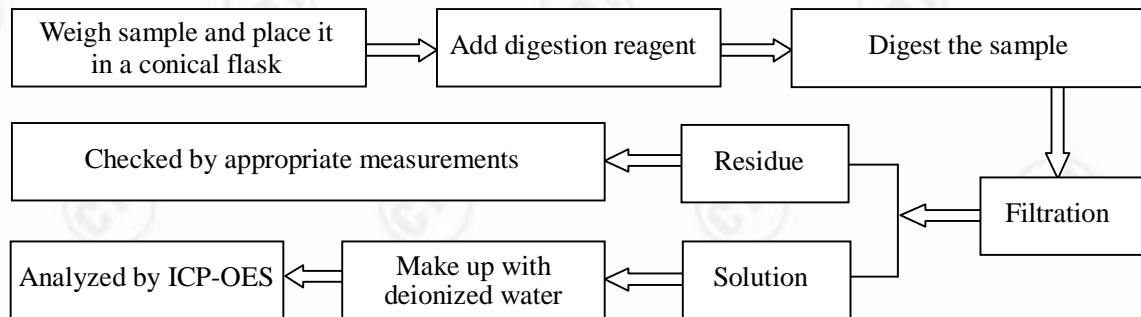
Report No.: RLSZD000857290004

Page 4 of 6

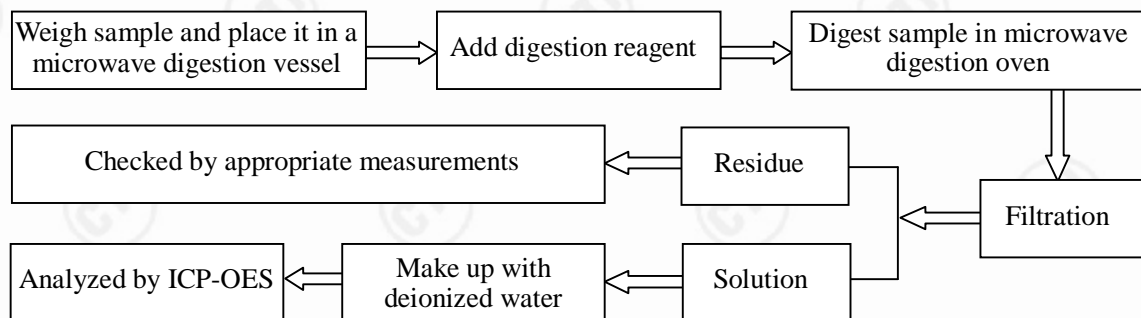
Test Process :

1. Test for Pb/Cd Content

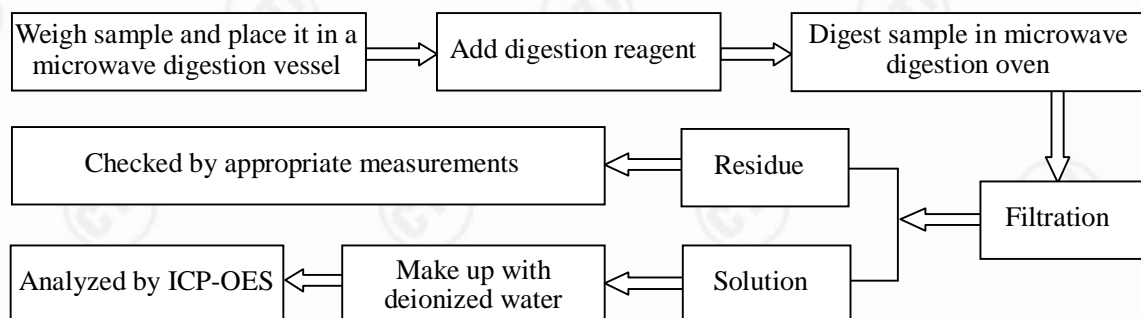
(1) IEC 62321:2008 Ed.1 Sec.9



(2) IEC 62321:2008 Ed.1 Sec.10

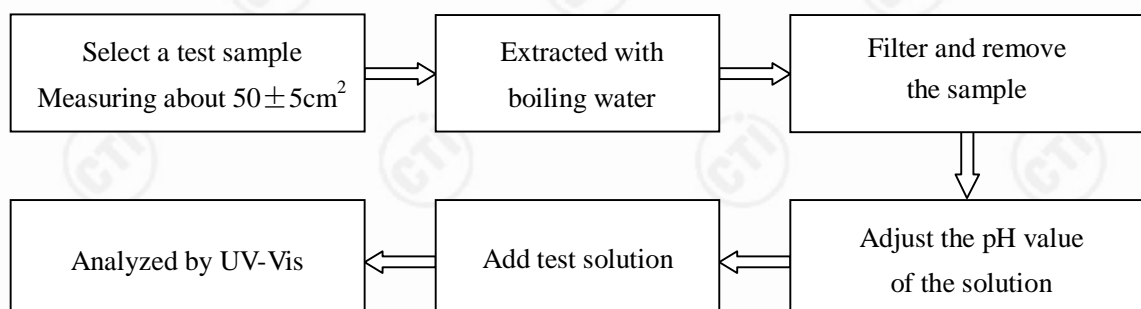


2. Test for Hg Content



3. Test for Chromium(VI) Content

(1) IEC 62321:2008 Ed.1 Annex B

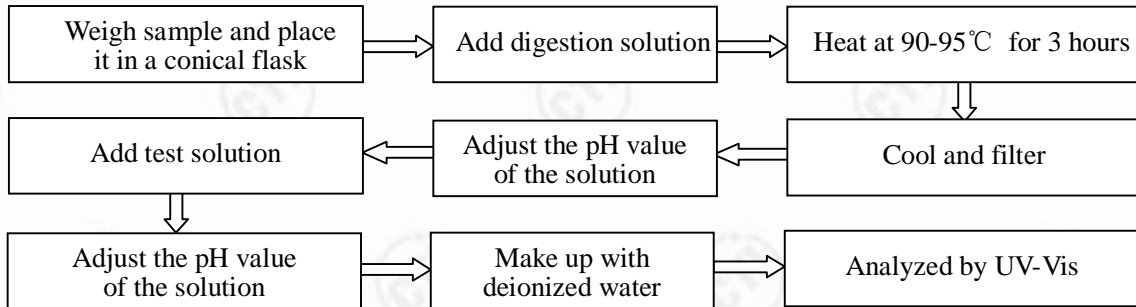


Test Report

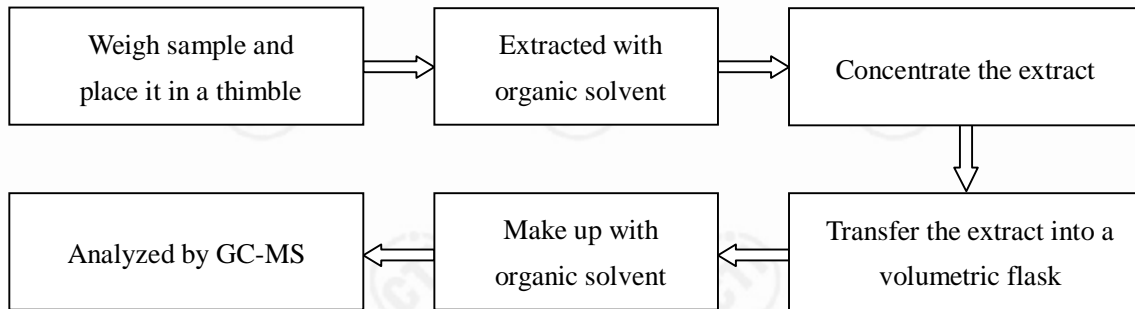
Report No.: RLSZD000857290004

Page 5 of 6

(2) IEC 62321:2008 Ed.1 Annex C



4. Test for PBBs /PBDEs Content



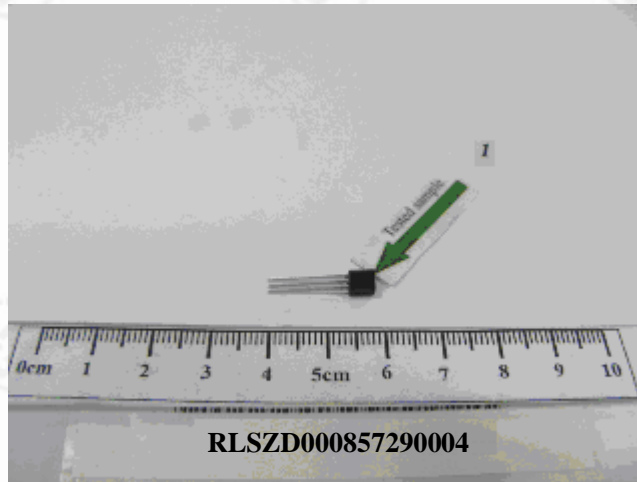
Test Report

Report No.: RLSZD000857290004

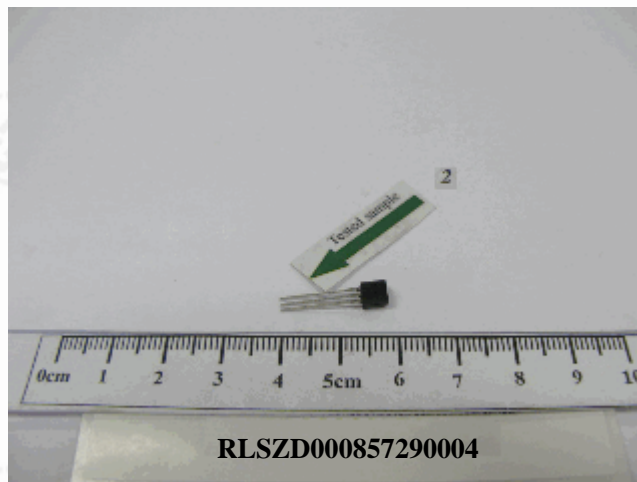
Page 6 of 6

Photo(s) of the sample(s)

Sample No.1



Sample No.2



*** End of report ***

This report is considered invalidated without the Special Seal for Inspection of the CTI, This report shall not be altered, increased or deleted. The results shown in this test report refer only to the sample(s) tested. Without written approval of CTI, this test report shall not be copied except in full and published as advertisement.

Building C, Hongwei Industrial Zone, Baoan 70 District, Shenzhen